

## X300 Access Terminal Kit

### Key Features

- Enables sharing one host PC with up to 7 users
- Connect users directly to the host PC via standard cable up to 10 m (33 ft) long
- Includes terminal services software for Windows/Linux
- Supports standard applications including multi-media
- Slashes computing acquisition & support costs
- Easy to setup, maintain and secure
- Compact, reliable & energy efficient (no fans or disks)



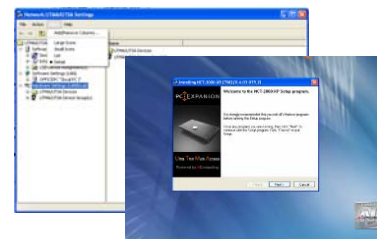
### Overview

The NComputing X300 kit enables you to dramatically cut computing costs by sharing the untapped power of existing PCs. The kit's PCI card, access terminals and software work together to efficiently harness excess computing capacity and enable multiple users to share a single PC. Each kit adds three users to a PC, so with two kits a total of seven users can share one PC simultaneously. Best of all, IT staff and end users do not need special training because the solution is easy to setup and is compatible with standard PC software.

The NComputing terminal services software (included) divides the PC's resources into independent sessions that give each user their own full PC experience. The optional NControl and NShield software add even more centralized management capabilities such as remote monitoring and host PC data backup.

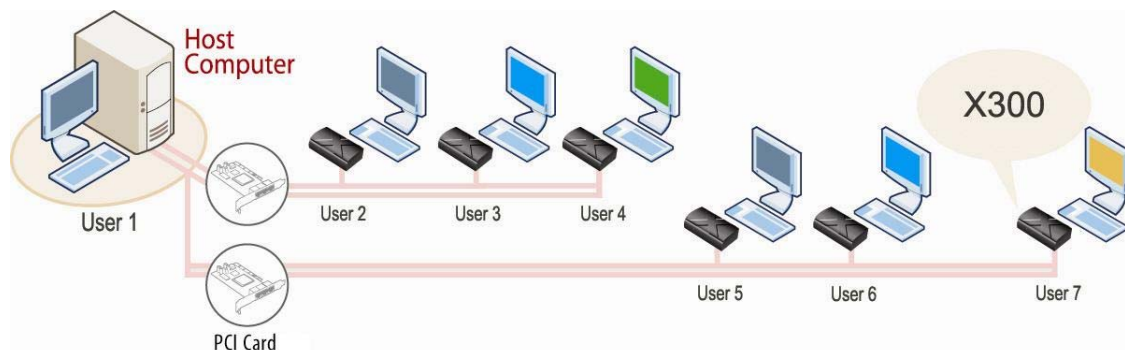
### System Configuration

With the NComputing solution, each user still has a standard monitor, keyboard, mouse and speakers. However, instead of connecting directly to the PC, these peripherals connect to the X300 access terminal on their desk. These very small, solid-state terminals connect over a standard Cat 5/6 cable to the host PC. The distance between the terminal and the PC can be up to 10 meters (33 feet).

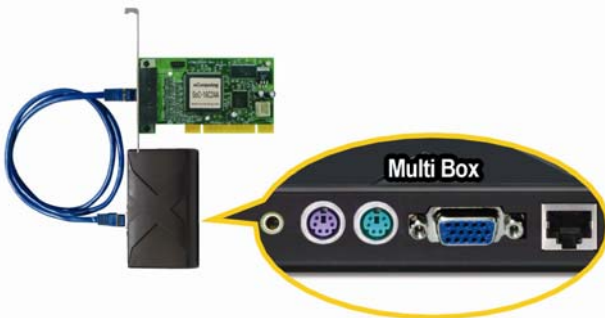


### NComputing Terminal Services Software

By delivering all the key components of this multi-user computing system, NComputing uniquely delivers a high performance solution at the lowest possible cost to you.



## X300 Access Terminal Kit Specifications

HARDWARE	
<b>Size</b>	Access Terminal: <i>Width</i> : 110 mm / 4.3 inches, <i>Height</i> : 28 mm / 1.1 inches, <i>Depth</i> : 65 mm / 2.6 inches PCI Card: Half-size PCI plug-in card
<b>Power Supply</b>	Power to the access terminals is provided by the PCI plug-in card through the Cat 5/6 cable No external power adapters are required
<b>LED Indicator</b>	<i>Power/Connection</i> : Green LED located on front of access terminal
<b>Peripheral Connections</b>	 <p style="text-align: right;"><u>Connections (left to right):</u>                      - Speaker Jack                      - PS/2 Keyboard Port                      - PS/2 Mouse Port                      - VGA Monitor Port                      - RJ-45 Connection (to PC via Cat 5/6 cable)</p>
<b>Connection to Host PC</b>	Standard Category 5 or 5e UTP cable: up to 5 meters (16 feet) Standard Category 6 STP cable: up to 10 meters (33 feet)
<b>Video Resolution</b>	800x600 and 1024x768, 16-bit color maximum, 60 Hz refresh rate
<b>Audio</b>	16-bit stereo output via speaker port
<b>Data Security</b>	No USB ports on terminal ensure absolute data security USB ports on host PC can be assigned to different users <i>Note</i> : Local user access to USB ports requires separate USB extension cables – not included
<b>Reliability (MTBF)</b>	505,859 hours (calculated using Bellcore Issue 6 TR-332, Case 2, Part I at 40°C)
<b>Certifications</b>	FCC Class B, CE, MIC, NOM, GOST-R
TERMINAL SERVICES SOFTWARE	
<b>Supported Operating Systems</b>	Microsoft: Windows XP Professional and Windows 2000 Professional Linux: several variants (refer to Support section of Website for latest supported versions of Linux)
<b>Supported Software</b>	PC applications including browsers, e-mail, office suites, media players, educational software and more.
<b>Maintenance</b>	Online remote update via NComputing Management Console
SYSTEM REQUIREMENTS AND OPTIONS	
<b>Host PC Configuration</b>	1 Remote User: Pentium 4, >1.3 GHz, 512 MB RAM 2-3 Remote Users: Pentium 4 (HT), >2.4 GHz, 512 MB RAM 4-7 Remote Users: Pentium 4 (HT), >3.0 GHz, 1 GB RAM
<b>Kit Contents</b>	One X300 Kit includes three (3) access terminals, one PCI card, terminal services software installation CD/license, and Quick Install Guide. PC, keyboard, mouse, speakers and other peripherals are NOT included and must be purchased separately. Application software and OS licenses for the host PC and terminals may be required by the respective software vendor and must be purchased separately.
<b>Optional Software</b>	NControl (remote control and management), NShield (Hard Drive partition recovery)

© Copyright 2007. NComputing, Inc. All rights reserved. Specifications are subject to change without notice. NComputing is trademark of NComputing Inc. Microsoft and Windows are registered trademarks of Microsoft Corporation. Intel and Pentium are registered trademarks of Intel Corporation. Linux is a registered trademark of Linus Torvalds. Other trademarks and trade names are the property of their respective owners.

3.8.07